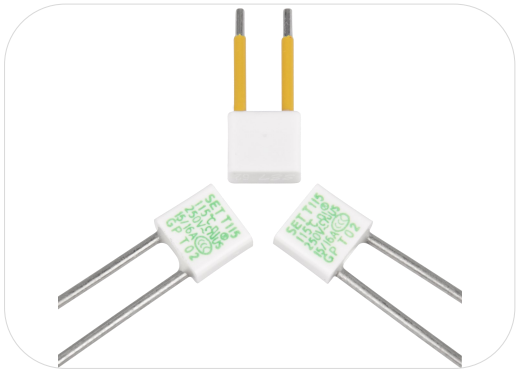


# 温度保险丝

Thermal-Link (ATCO)

T系列 Series



## 应用 Applications

- 灯具 Lamps
- 开关电源 Switched-Mode Power Supplies
- 家用电器 Home Electrical Appliances
- 防雷插座 Power Strips
- 电池 Batteries
- 电涌保护器 Surge Protective Devices

## 特性 Features

- 动作温度精确 High Accuracy of Functioning Temp.
- 一次性动作而不可复位 Non-Resettable
- 大通流容量 High Surge Capacity
- 环保型产品 RoHS & REACH Compliant

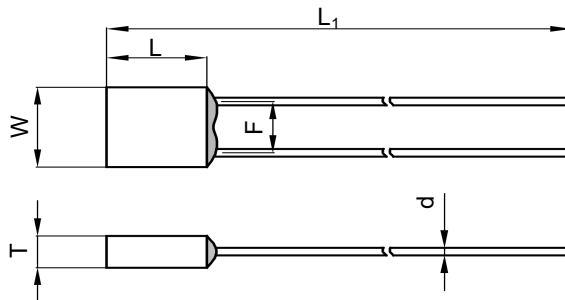
## 定制 Customization

- 温度 Temp.
- 引线长度 The Length of Lead Wires
- 可编带包装 Taping Packing Available
- 引线可采用绝缘线 Lead Wires can be Insulated

## 安规认证 Agency Approvals






| 安规 Agency Mark | 标准 Standards   | 认证号 No.  |
|----------------|----------------|--|
|                | UL 60691       | E214712  |
|                | CAN-CSA-E60691 | E214712  |
|                | EN 60691       | 40018082   |
|                | J60691         | PSE16021059、PSE16021060<br>PSE16021061、PSE16021062 |
|                | GB 9816.1      | 2020980205000189                                   |

## 尺寸 Dimensions (mm)



| L         | L <sub>1</sub> | W         | T         | d           | F         |
|-----------|----------------|-----------|-----------|-------------|-----------|
| 7.5 ± 0.5 | 35.0 ± 2.0     | 8.3 ± 0.5 | 3.4 ± 0.2 | 1.05 ± 0.05 | 5.2 ± 0.5 |

技术参数 Specifications

| 型号<br>Model | 额定动作<br>温度<br>$T_f$ | 熔断<br>温度<br>Fusing<br>Temp. | 保持<br>温度<br>$T_h$ | 极限<br>温度<br>$T_m$ | 额定<br>电流<br>$I_r$ | 额定<br>电压<br>$U_r$ | 标称放电<br>电流<br>$I_n$<br>8 / 20 $\mu$ s<br>(15<br>Times) | 最大放电<br>电流<br>$I_{max}$<br>8 / 20 $\mu$ s<br>(1 Time) |  |  |  |  |  |  | RoHS<br>REACH |
|-------------|---------------------|-----------------------------|-------------------|-------------------|-------------------|-------------------|--|---|---|---|---|---|---|---|---------------|
|             | (°C)                | (°C)                        | (°C)              | (°C)              | (A)               | (V)               | (kA)   | (kA)  | UL  | cUL   | VDE   | PSE   | CCC   | TUV   |               |
| T102        | 102                 | 98 ± 2                      | 72                | 200               | 15 / 16           | AC 250            | 6  | 12  | ●   | ●   | ●   | ●   | ●   | ○   | ●             |
|             |                     |                             | 61 <sup>a</sup>   |                   |                   |                   |  |   |   |   |   |   |   |   |               |
| T115        | 115                 | 111 ± 2                     | 85                | 200               | 15 / 16           | AC 250            | 6  | 12  | ●   | ●   | ●   | ●   | ●   | ○   | ●             |
|             |                     |                             | 73 <sup>a</sup>   |                   |                   |                   |  |   |   |   |   |   |   |   |               |
| T125        | 125                 | 121 ± 2                     | 95                | 200               | 15 / 16           | AC 250            | 6  | 12  | ○   | ○   | ○   | ○   | ○   | ●   | ●             |
| T136        | 136                 | 131 ± 2                     | 106               | 200               | 15 / 16           | AC 250            | 6  | 12  | ●   | ●   | ●   | ●   | ●   | ○   | ●             |
|             |                     |                             | 101 <sup>a</sup>  |                   |                   |                   |  |   |   |   |   |   |   |   |               |
| T150        | 150                 | 145 ± 2                     | 118               | 200               | 15 / 16           | AC 250            | 6  | 12  | ●   | ●   | ○   | ○   | ○   | ●   | ●             |

a: VDE标准升级要求, 保持温度测温点明确为试验箱的环境温度; 之前的测温点为产品本体。

s: VDE standard upgrade requirements, holding temperature( $T_h$ ) is defined as the inside environment temperature of test equipment cavity, the previous temperature measurement point is the product shell temperature.

备注 Note:

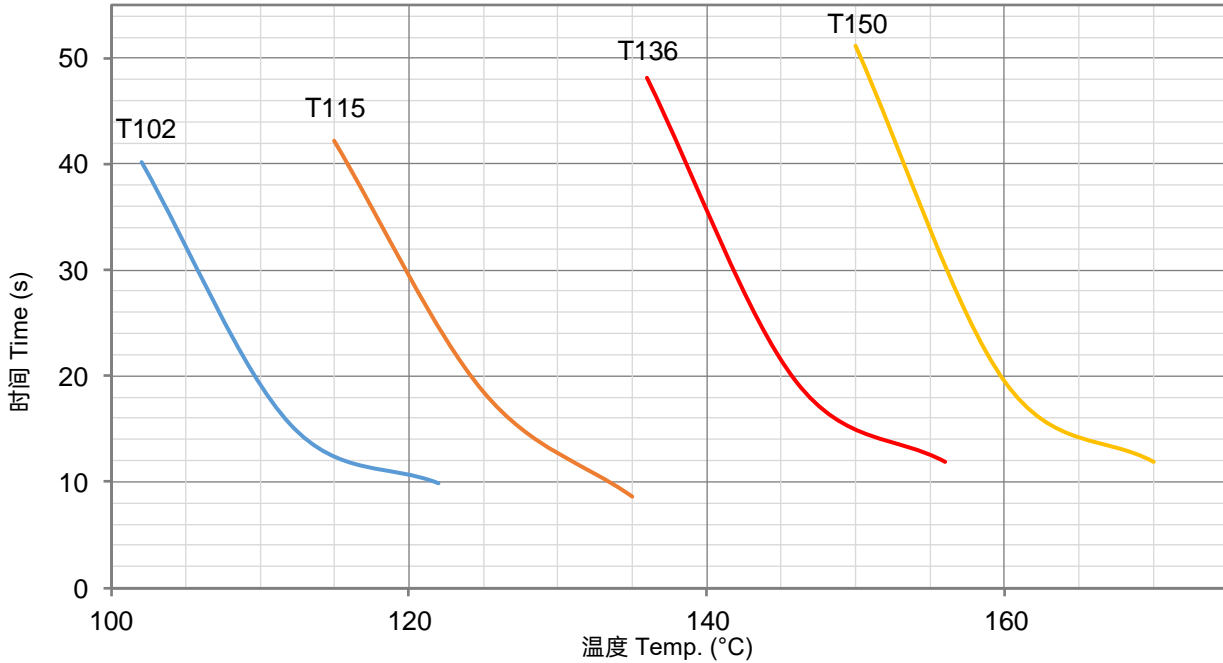
"●"表示产品已通过认证。Means certificated.

"○"表示产品未有认证。Means non-certificated.

产品温度时间曲线图 (仅供参考)

Product Temp.-Time Curve (For Reference Only)

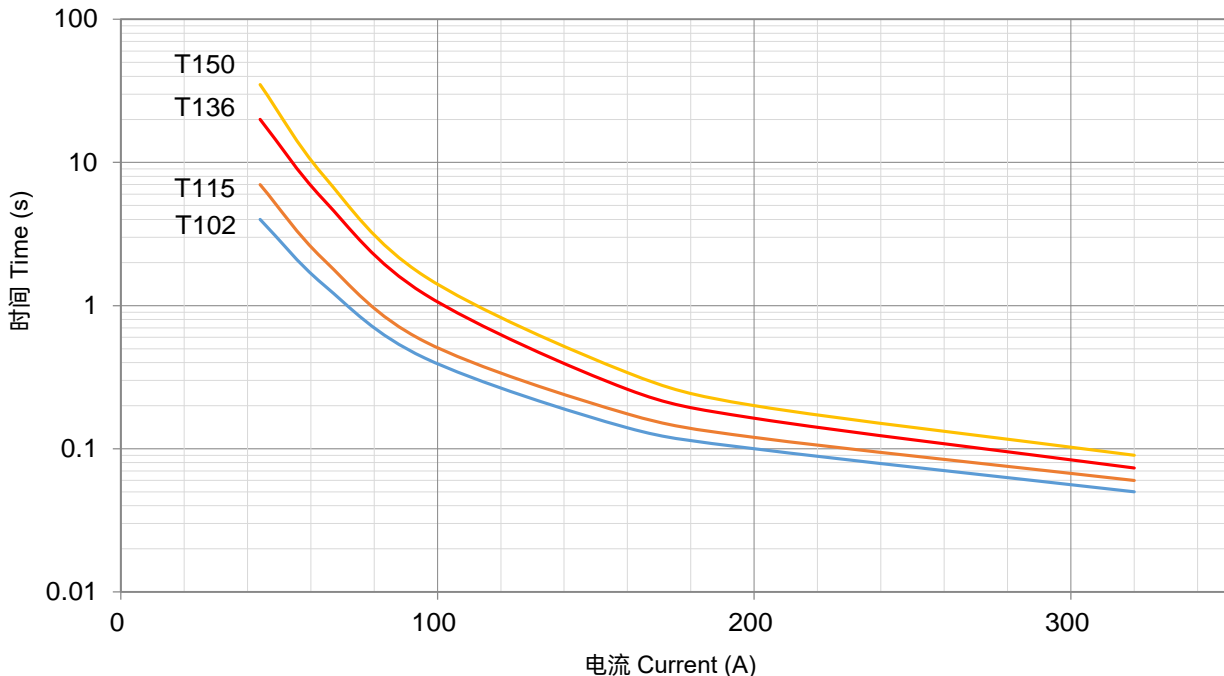
温度保险丝在不同温度油浴中断开的温度时间曲线。  
The Temp.-Time Curve of Thermal-Link in different Temp. oil baths.



产品电流时间曲线图 (仅供参考)

Product Current-Time Curve (For Reference Only)

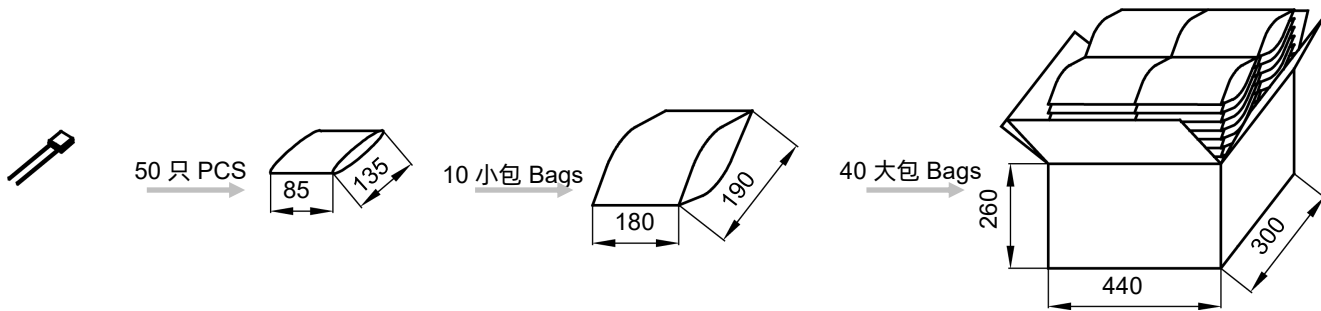
温度保险丝在室温 $25 \pm 2$  °C条件下, 测试数倍过载电流下的断开时间曲线。  
The Current-Time Curve shows functioning time at multi-times rated current at room temperature  $25 \pm 2$  °C.



包装信息 Packaging Information

散装 Bulk

| 项目 Item              | PE 袋 Bag | PE 袋 Bag  | 包装箱 Carton      |
|----------------------|----------|-----------|-----------------|
| 尺寸 Dimensions (mm)   | 135 × 85 | 190 × 180 | 440 × 300 × 260 |
| 数量 Quantity (PCS)    | 50       | 500       | 20000           |
| 毛重 Gross Weight (kg) |          |           | 17.0 ± 10%      |



编带 Taping

| 项目 Item              | 盒子 Box         | 包装箱 Carton      |
|----------------------|----------------|-----------------|
| 尺寸 Dimensions (mm)   | 328 × 200 × 70 | 480 × 340 × 220 |
| 数量 Quantity (PCS)    | 2000           | 12000           |
| 毛重 Gross Weight (kg) |                | 12.0 ± 10%      |

